

# House & Land Package



Lot 6 Serenity Way 'Sanctuary Rise'  
Hillbank

Myrtle Alf.  
27.05  
squares

House & Land from only

**\$478,741\***

including double garage

## Specifications

Living Area : 194.50 sqm

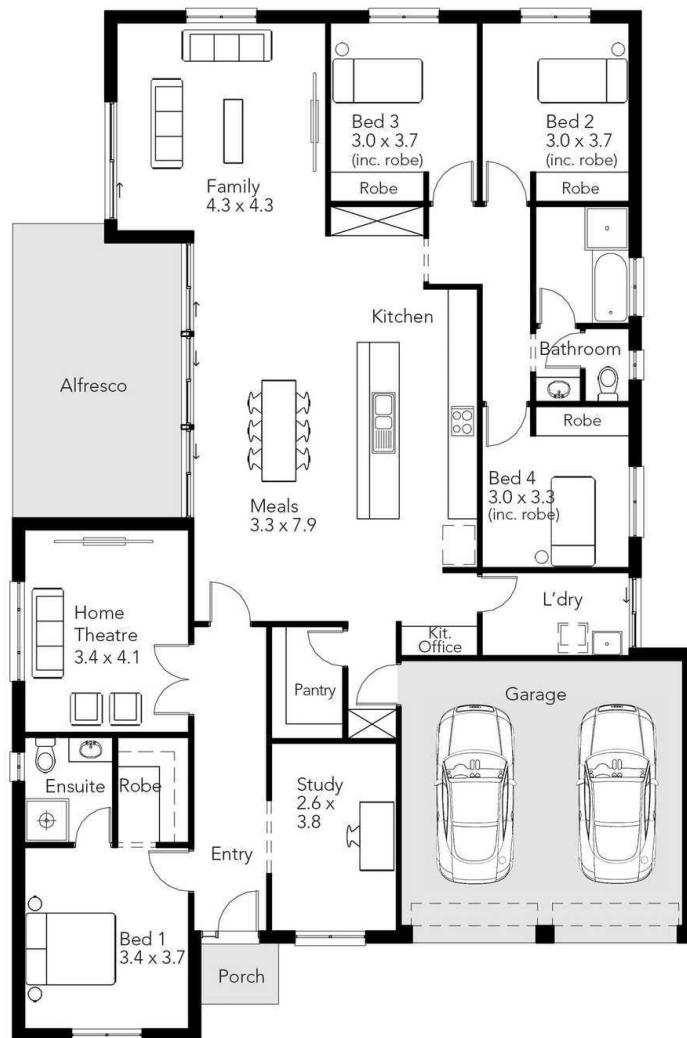
Alfresco : 20.03 sqm

Garage : 34.77 sqm

Total : 251.29 sqm

## You get all this & more

- Double garage
- Colorbond roof
- Upgraded elevation - luxury
- Overhead cupboards to ceiling
- Ducted retractable rangehood
- Dishwasher provision
- Stainless steel appliances
- Flat extended breakfast bar
- Milan semi-frameless shower screens
- TV Points x 2
- Stormwater allowance
- Flooring allowance to whole home
- Paved driveway and path to home
- Ducted reverse cycle airconditioning
- Siteworks and footings allowance and so much more!



**STATESMAN**  
HOMES

Unbeaten  
on Price  
and Quality

[www.statesman-homes.com.au](http://www.statesman-homes.com.au)

**Philippe Caudoux**

M 0410 495 189

[philippe@statesman-homes.com.au](mailto:philippe@statesman-homes.com.au)

08 8366 0080

\* Conditions apply. Certain elevations may not match the particular floor plan published in this package and, as such, all floor plans and elevations are for illustration purposes only. Land subject to availability. The land referred to in this promotion is not owned by us. We make no representation and, to the extent permissible at law, we disclaim all liability, as to the suitability of the land to build on, or the suitability of any house design, or otherwise. You must satisfy yourself of that by inspection, or by taking professional advice, or otherwise. Pricing is indicative only and based on standard costings. Price may vary depending on selections, engineering, council and utility requirements and adjustments to allowances. All packages subject to final council approval. Alan Hickinbotham Pty Ltd ABN 13 007 567 222, RLA 230557. Construction Services Australia Pty Ltd ABN 99 007 641 787, Building Licence G8969. © Copyright 2014.